

dp-400

Specification/ Performance Data

**HYDRAULIC/PNEUMATIC DRIVE DRILL
(Up to 36" - 900 mm hole size)**

- **DP - HYDRAULIC POWERED DRILL MACHINES**

- Heavy Duty drill machines used extensively for construction tasks. Readily fitted as an attachment to cranes, excavators and Trucks. Standard and heavy duty models provide an economical solution to all general purpose vertical drilling requirements. Efficient performance, high return on capital, and low running cost make these drills a favourite with users.
- Wide Application - Ensures maximum utilization within differing construction requirements. Pneumatic hammer compatible.
- Extensive range - Covers differing hole diameters and depths.
- Simple installation - Can be fitted easily to various equipments in a short time.
- Variable Strokes - Up to 7M at one operation - Decreases construction time.
- Long Term Reliability - Reduces maintenance costs.
- Hard wearing materials - Extensive use of 316 SS on wearing parts assists long operational life.
- Use of lift machine hydraulics eliminates the need for an additional power pack.
- Simple Operating Procedures allow fast operator familiarity.
- Spare Parts Convertability allows common parts to be used on different machines.

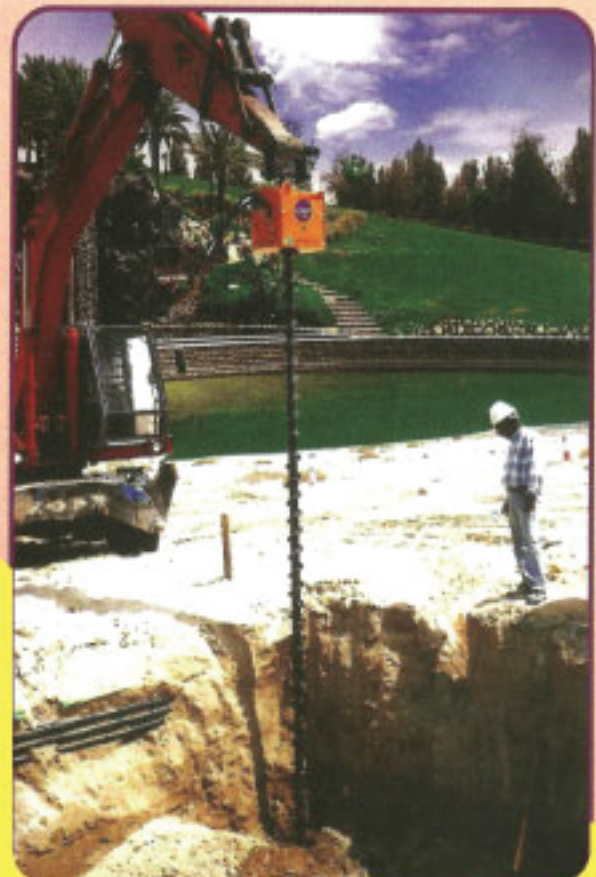
DEWATERING

POST HOLES

WARER WELLS

SOIL ANALYSIS

CATHODE PROTECTION



SMALL, MEDIUM & LARGER AUGERS (150mm TO 900mm)

Robust Efficient Design

Heavy duty construction using well proven and uncomplicated design - Readily maintained without specialist support 316 Stainless and other hard wearing steels used extensively to provide adequate safety factors during use.

Extensive Range of Applications

The ease with which the drill may be fitted to a wide variety of lifting machines (Cranes, Excavators, Backhoes etc.) enables it to be simply fitted to such equipment on different sites. Flexible mounting on different machines allows the drill to carry out different tasks. Typical applications include constructing boreholes for geo-technical investigations, installing wellpoints used during dewatering, drilling foundation holes for electricity & telephone poles, and establishing wells.

High Performance

Option of two sizes of hydraulic motor configuration suitable for standard and heavy duty applications - hole sizes up to 300 mm with model DP - 400 ST and up to 900 mm. with model DP - 400 HD. Maximum depth of drilling 30M (6" auger)

Installation

The drill head is suspended on the end of the lift machine boom or dipper by 2 articulating links. The drill is connected to the machine hydraulics by three hoses, running along the side of the boom / dipper structure.

Materials of Construction

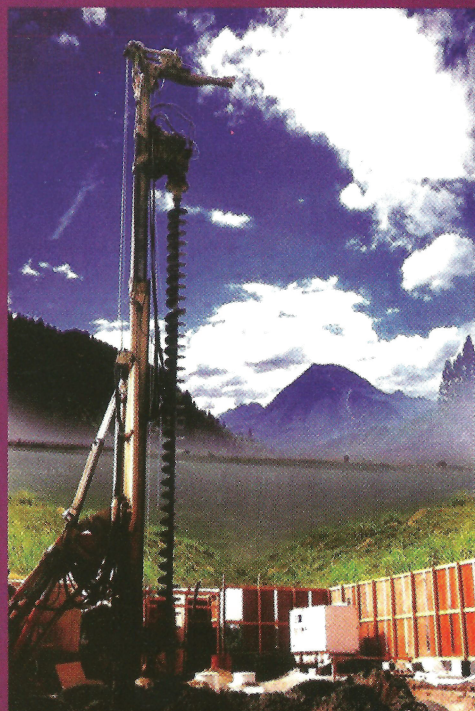
Hydraulic Motor	Eaton or similar
Steel	316 SS for wearing parts

Parts Convertability

W & P consumables are suited for use on a wide range of drills supplied by different manufacturers

Operational Detail

Max Auger diameter (mm)	300	900
Max Auger length (mm)	1500	1500
Drill Control (2 direction)	Cab Mounted	
LIFT MACHINE	DP-400	DP-400 HD
HYDRAULICS		
Required Max		
Hydraulic Pressure (Bars)	205	205
Required max oil flow (lpm)	80	100
Drill Details	DP-400 ST	DP-400 HD
Height (mm)	500	550
Height with links (mm)	960	1000
Width & Length (mm)	660 & 465	660 & 465
Torque (NM) @ 175 Bars	2000	4000



Water & Power Engineering Ltd.

UK Sales: Bristol, BS 20 7EQ Tel: +44 1275-390190 Fax: +44-1275-817488

KAMPCO PUMPS & DEWATERING CO. LTD.

Saudi Arabia Sales: P.O. Box 4422, Al-Khobar 31952, KSA, Tel +966 3 894 4111, Fax +966 3 894 4333, www.kampcosaudi.com, mail: pandd@panddsa.com

